

Mark Gormel, Native Plant Horticulturist, February 12

On Sunday, February 12, 2012, Chester Ridley Crum Watersheds Association (CRC), Penn State Brandywine, and Easttown Township will host Mark Gormel, native plant horticulturist and consultant, as he presents "Native Plants, Birds, Bees, Butterflies, and Healthy Watersheds - What's the Connection?" Mark is the Horticultural Coordinator for Brandywine Conservancy and a well-known lecturer and nature photographer. His talk will illustrate the critical relationships between specific native plants and the wildlife and habitat zones they support. Learn strategies for creating environmentally sound gardens in which wildlife, birds and butterflies will thrive.

The program will take place from 2 pm to 3:30 pm in the Tomezsko Building Auditorium at the Penn State Brandywine campus located at 25 Yearsley Mill Road, Media (off of Route 352 in Middletown). The program is free and open to the public. Please contact CRC at 610-892-8731 or crc@nni.com to pre-register, since space is limited. For more information, please see www.crcwatersheds.org

Chester-Ridley-Crum Watersheds Association & Penn State Brandywine



jointly welcome

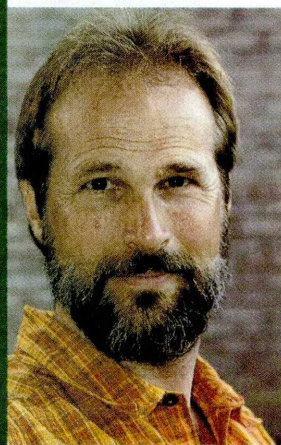
Mark Gormel

*Native Plant Horticulturist,
Consultant, Lecturer, and
Nature Photographer*

**Sunday,
February 12, 2012
2:00pm-3:30pm**

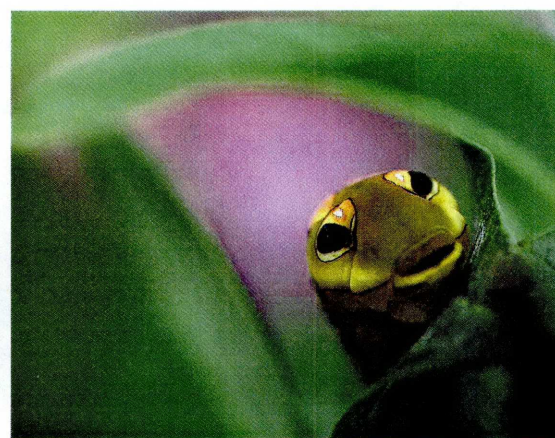
Penn State Brandywine
Tomezsko Building Auditorium
25 Yearsley Mill Road, Media, PA 19063
<http://www.brandywine.psu.edu/Information/map.htm>

**“ Native Plants, Birds, Bees,
Butterflies, and Healthy Watersheds:
What’s the Connection? ”**



*Mark Gormel is
Horticultural Coordinator
for the Brandywine Conservancy*

Photos © and courtesy of Mark Gormel.



Free and open to the public.

Preregistration requested: Contact CRC at: crc@nni.com or 610-892-8731

Cell phone contact in case of questionable weather 610-470-6960

For more information please see: www.crcwatersheds.org