

# Everything EASTTOWN

EASTTOWN TOWNSHIP NEWSLETTER

SPRING 2024



**Taking care of our environment  
together for a more sustainable future.**

***Recycling Simplified:  
Requirements & Tips pg. 21***

## Inside This Issue

Township Directory.....	3	Berwyn Bird Walk.....	10
Newly Elected Supervisors .....	3	Idlewood Farm .....	14
Public Safety Notice: Sight Lines .....	3	Historical Profile: William H. Burns .....	15
Summer Camp Information .....	4	Preserving Historic Waynesborough .....	18
Camp Counselors Needed.....	4	Sewer Authority News .....	20
Summer Concerts .....	4	Trash Collection Information.....	20
Library News.....	6	Recycling Requirements .....	21
Growing Greener Grant .....	8	Yard Waste Collection Calendar.....	22
Family Friendly Bike Route .....	8	Kids Page: Hidden Objects .....	22
Scam Alerts.....	10		

**Jim Miller Inc.**  
**ROOFING • SIDING • GUTTERS**  
**2522 Haverford Road**  
**484.412.8246**  
**JimMillerInc.com**

**HYNESCONSTRUCTION.COM | 610-896-6388**



Free Estimates | Prompt Service | References | All Work Guaranteed  
Insured | PA018897 | OVER 41,000 SATISFIED CUSTOMERS!

**610-896-6388**  
119 SIBLEY AVENUE • ARDMORE

**DECKS are booking up. Schedule your estimate now!**

**HYNESCONSTRUCTION.COM**

Up To **\$500 Off**  
**ANY COMPLETE  
ROOF, SIDING or DECK**  
HYNES CONSTRUCTION 610-896-6388  
Based on 5% of Total Job. Not Valid With Other Offers or  
Previous Contracts. Must Present at Time of Initial Visit.

**\$250 Off**  
**ANY COMPLETE  
PAINT JOB**  
HYNES CONSTRUCTION 610-896-6388  
Min. \$3500 Not Valid With Other Offers or  
Previous Contracts. Must Present at Time of Initial Visit.

FREE ESTIMATES

FREE ESTIMATES

**SERVICING THE "JERSEY SHORE"**



*Expand your LIVING space.*

**Call TODAY and START REMODELING NOW! 610-896-6388**

# TOWNSHIP DIRECTORY

## BOARD OF SUPERVISORS

Erik Unger, Chair  
eunger@easttown.org

Michael Wacey, Vice Chair  
mwacey@easttown.org

Sean Axel, Member  
saxel@easttown.org

Alex Bosco, Member  
abosco@easttown.org

Susan LeBoutillier, Member  
sleboutillier@easttown.org



## TOWNSHIP ADMINISTRATION

Don Curley  
Township Manager  
dcurley@easttown.org

Jonathan Ewald  
Assistant Township Manager  
jewald@easttown.org

David M. Fiorenza, MBA  
Director of Finance  
dfiorenza@easttown.org

Colleen Gray  
Director of Planning and Zoning  
cgray@easttown.org

Joseph A. Rodo  
Director of Public Works  
jrdo@easttown.org

Amber M. Osborne  
Library Director  
aosborne@cls.org

## MUNICIPAL COMPLEX

566 Beaumont Road  
Devon, PA 19333  
Website: www.easttown.org  
Phone: 610-687-3000  
Email: easttown@easttown.org

## POLICE ADMINISTRATION

Email: police@easttown.org  
Non-Emergency: 610-341-9780  
David J. Obzud  
Chief of Police  
dobzud@easttown.org

## EASTTOWN LIBRARY

720 First Avenue  
Berwyn, PA 19312  
Website: www.easttownlibrary.org  
Phone: 610-644-0138  
Email: info@easttownlibrary.org

## BERWYN FIRE COMPANY

23 Bridge Avenue  
Berwyn, PA 19312  
Website: www.berwynfireco.org  
Non-Emergency: 610-644-6050  
Email: info@berwynfireco.org

## PAOLI FIRE COMPANY

69 Darby Road  
Paoli, PA 19301  
Website: www.paolifirecompany.org  
Non-Emergency: 610-644-1712

## PUBLISHED BY FRANKLIN MAPS

610-265-6277  
Email: FranklinMaps@aol.com

Easttown Township Staff are committed to providing services to all our residents and businesses, being responsive to your needs, offering the highest level of quality service, while remaining steadfast in our desire to find ways to operate more efficiently and economically. If you have any questions, comments, or suggestions, please do not hesitate to contact us.

What would you like to see? If you have content suggestions for future editions, email us at easttown@easttown.org.

## RESIDENTS ELECT NEW SUPERVISORS

Easttown Township welcomes newly elected Supervisors Sean Axel and Susan LeBoutillier

On November 7, 2023, Sean Axel and Susan LeBoutillier were elected as new Supervisors in Easttown Township. Sean and Susan ran for the seats previously held by Beth D'Antonio and Betsy Fadem, both of whom did not seek reelection. We thank both Beth and Betsy for their many years of service to the community.

At the reorganization meeting on January 2, 2024, Sean and Susan were sworn in by Chester County District Judge Mackenzie W. Smith in the Township Building Meeting Room.

Sean has been a teacher in the Tredyffrin/Easttown School District for 20+ years, and a resident for 15+ years. He has also volunteered as a coach for Berwyn Paoli Little League, Paoli Wildcats, and PALS cat rescue. He will be serving as Board

Liaison to the Historical Commission and the Library Board.

Susan is a long-time Easttown Resident, owns her own garden center in Downingtown, a three-time Philadelphia Flower Show award winner, past board member of Jenkins Arboretum, and enjoys throwing pottery in her shed. She will be serving as Board Liaison to the Parks and Recreation Board and Planning Commission.

## PUBLIC SAFETY NOTICE

### Help improve sight-lines for pedestrians and drivers

Safety is a top priority here at Easttown Township. Late winter and early spring are the best times of year to stretch your legs and assess your property boundaries, sidewalks and street corners.

Unightly, potentially hazardous brush and overhanging branches should be removed when it borders the roadway, especially if you have a corner property where drivers' sight lines may be blocked. No one wants to be in a position on the roadway where you think you're clear of intersecting traffic only to have a vehicle pop into view with no time to react.

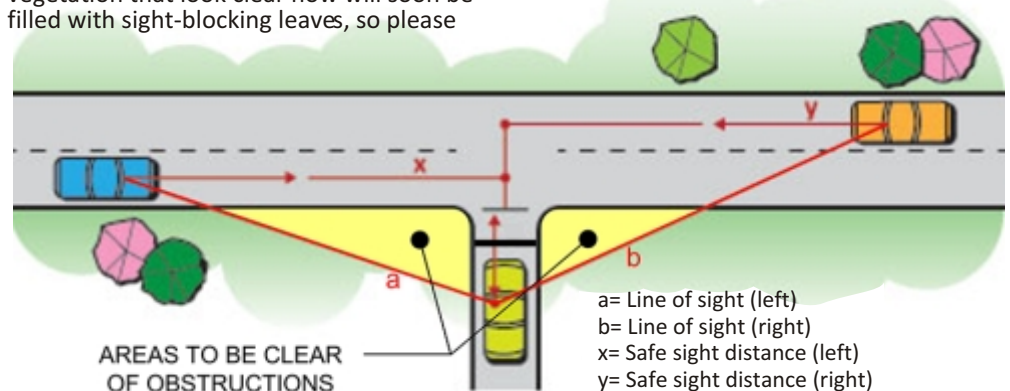
**As a good rule of thumb:** drivers at a stop sign should be able to see a minimum of 150 feet - up to almost 300 feet - to the left and to the right, depending on the class of roadway the vehicle is entering.

The most frequent concern from residents last year involved turning off of side streets onto Darby Paoli Road (SR 252).

Overgrown shrubs, branches and other vegetation that look clear now will soon be filled with sight-blocking leaves, so please

plan ahead and clear these areas before they become a spring and summertime concern!

*Easttown Township and your fellow neighbors thank you.*



# SUMMER CAMPS



For rising 1st graders thru 8th grade

## Activities:

- NEW - 9 Square
- Field Day Challenges
- Arts & Craft Projects
- Board Games
- Olympic Games
- And more...

## Dates:

- Week 1: July 1
- Week 2: July 8
- Week 3: July 15
- Week 4: July 22
- Week 5: July 29

## Location:

Hilltop Park - Devon

## Register Now At:

[www.easttown.org](http://www.easttown.org)



**Registration Fee:**  
 1st Child: \$75/wk  
 2nd Child: \$70/wk  
 3rd Child: or more:  
 \$65/wk per child

## COUNSELORS NEEDED FOR 2024 SUMMER RECREATION PROGRAM

Applications now being accepted for camp counselors and counselors-in-training. The camp runs from July 1<sup>st</sup> through August 2<sup>nd</sup>. Do you have what it takes?

We are looking to hire energetic and fun-loving counselors for the upcoming season! You will lead fun and educational outdoor activities while ensuring the safety of all. Ideal candidates have prior experience at a camp, are skilled in one or more of the activities our camp has to offer and enjoys working with kids. These positions are excellent for someone who has an interest in pursuing childcare, early childhood education, or child development as a career.

### Duties and Responsibilities:

- Oversee children attending the program
- Lead various outdoor activities
- Ensure the safety of all campers
- Act as a mentor and authority figure

To apply, visit the Summer Camp page by navigating to Departments -> Parks & Recreation -> Summer Camp. For more information or if you have any questions, call the Administration Building at 610-687-3000 x120.

**REPRESENTATIVE SHUSTERMAN**  
**"IT SHOULD BE A LAW" ESSAY CONTEST**  
 Deadline: April 12, 2024  
 Open to ALL 4th Grade students who live or attend school in the 157th District.  
 MORE INFO | [Rep@shusterman.pa.gov](mailto:Rep@shusterman.pa.gov) | 484-200-8280

**Summer CONCERT SERIES**  
 Hilltop House Garden  
 7:00 - 8:30 PM  
 Sponsored by  
 Parks and Recreation Board of Easttown Township  
 \*in case of inclement weather, concert will be rescheduled.\*

- Brown Sugar | Rolling Stones Tribute**  
JUNE 12
- Jeff Krick, Jr. | Elvis Tribute**  
JUNE 26
- Billy Bauer Band | DMB Tribute**  
JULY 17
- Real Diamond Band**  
JULY 31
- with Uptown Band on**  
JULY 4 @ JOHNSON PARK



# FIRST Commonwealth Bank

Member FDIC

*Time to be first.*

### Devon Office

105 Lancaster Ave. • Devon • (610) 710-4222

### Doylestown Office

2003 S. Easton Road. - Suite 205 • Doylestown • (267) 880-4333

Formerly Centric Bank

## MAIN LINE MOWER

*Proudly serving you for 45 years*

**610.647.6047**



**STIHL**

**TORO**

526 Lancaster Ave. — Berwyn, PA

## Perfect Pooch



**Daycare • Boarding • Training • Grooming**



Open 7 Days A Week

All Breeds Welcome

Dogs Must Be Social  
*- Free Evaluation*

3 Acre Facility With  
Multiple Turf Yards

Spacious & Heated  
Indoor Play Area

8+ Hours of Playtime

(610) 337-7698 | www.perfect-pooch.com | 200 King Manor Drive, KOP

**Over 4,300 Homes see these ads!**  
**Call 610-265-6277 to advertise your business or organization.**

**Fully Staffed &  
Ready To Service You!**

**PAOLI**  
www.PaoliFord.com



**100<sup>TH</sup>**  
ANNIVERSARY

Celebrating 100 years of serving the community

### Winter Driving Special

**BATTERY SPECIAL**  
Replacement Battery  
Starting at

**\$149<sup>95</sup>**

(Most Cars & Trucks)

Valid at Paoli Ford only. Must present coupon at time of write-up. 1 coupon per vehicle per visit. Not valid with any other discounts, specials, offers or prior purchases. Tax not included. Expires 6/30/24.

### The Works

**\$69<sup>95</sup>**

- 5 Quarts Synthetic Blend Oil Change
- Tire Rotation & Pressure Check
- Brake Inspection

- Multi-Point Inspection
- Fluid Top-Off
- Battery Test
- Filter Check
- Belts & Hoses Check

Valid at Paoli Ford only. Must present coupon at time of write-up. 1 coupon per vehicle per visit. Not valid with any other discounts, specials, offers or prior purchases. Tax not included. Expires 6/30/24.

### Ford Mobile Services

Ask About These Services\*



- Oil Changes
- Wiper Replacement
- Multi-Point Inspections
- Filters
- Brake Services
- Batteries
- Recalls
- Lamps & Bulbs

\*Some services may not be currently available.

**BUILT TO LEND A HAND**

BUILT **Ford** PROUD

We know you have a lot to take care of, so let us take care of you. During these uncertain times, we're committed to implementing recommendations from the health authorities to give you peace of mind.

**Ask us about service options to address any concerns.**

#### Brake Special

**15% OFF**

**Brake Repairs**

Valid at Paoli Ford only. Must present coupon at time of write-up. 1 coupon per vehicle per visit. Not valid with any other discounts, specials, offers or prior purchases. Tax not included. Expires 6/30/24.

#### Winter Driving Special

**\$99<sup>95</sup>**

**Alignment Special**

Valid at Paoli Ford only. Must present coupon at time of write-up. 1 coupon per vehicle per visit. Not valid with any other discounts, specials, offers or prior purchases. Tax not included. Expires 6/30/24.

**\$25 OFF**

**State Inspection & Emission Test**

Most Cars & Trucks

Valid at Paoli Ford only. Must present coupon at time of write-up. 1 coupon per vehicle per visit. Not valid with any other discounts, specials, offers or prior purchases. Tax not included. Expires 6/30/24.

**\$95<sup>00</sup>**

**Cabin Filter & Deodorizing Service**

Most Cars & Trucks

Valid at Paoli Ford only. Must present coupon at time of write-up. 1 coupon per vehicle per visit. Not valid with any other discounts, specials, offers or prior purchases. Tax not included. Expires 6/30/24.

**Air Filter Replacement**

**Starting at \$29.95!**

Valid at Paoli Ford only. Must present coupon at time of write-up. 1 coupon per vehicle per visit. Not valid with any other discounts, specials, offers or prior purchases. Tax not included. Expires 6/30/24.

**WE SERVICE  
ALL MAKES  
& MODELS!**

**Paoli Ford**

100 W. Lancaster Ave. Paoli, PA

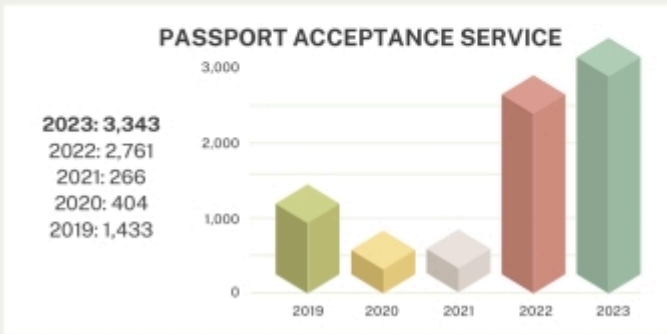
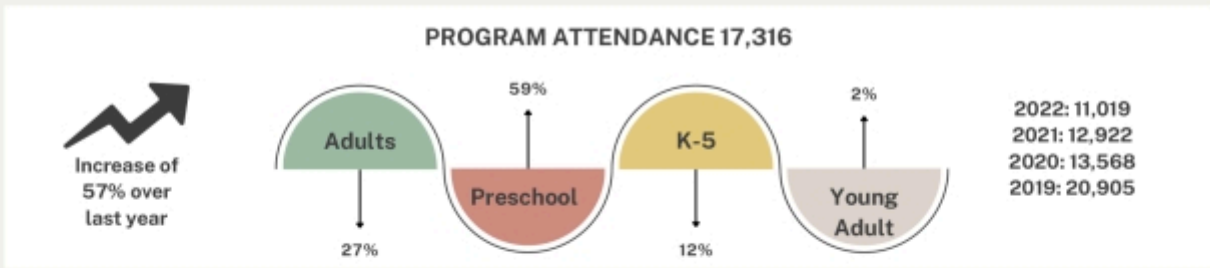
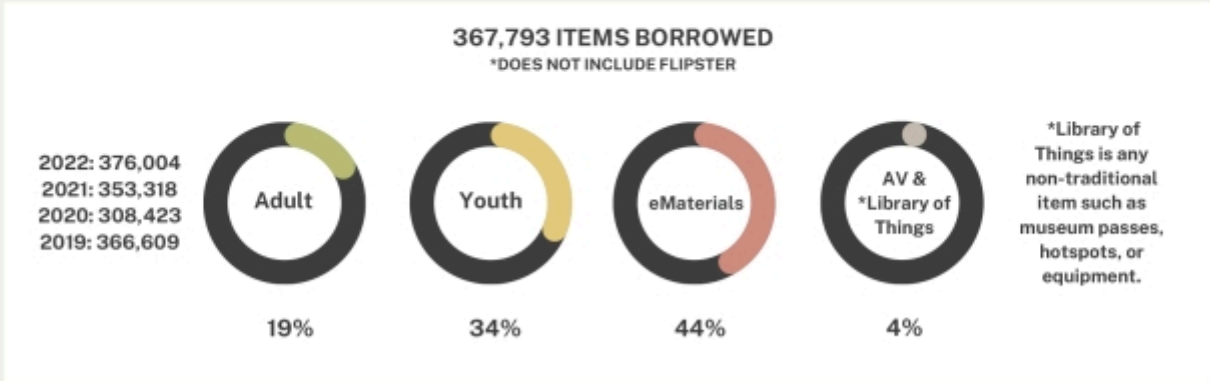
**855-866-7114**

www.PaoliFord.com

**Mon.-Fri 7:30am - 6:00pm**

**Sat. 8am - 4pm**

# EASTTOWN LIBRARY 2023



### AT A GLANCE

**837**  
New Members  
in 2023

**8,137**  
People consider  
Easttown their home  
library  
Decrease of 3%

**29,163**  
Public Computer Sessions

80% of sessions  
are WiFi

27% increase  
over last year

**4,603**  
Hours of  
Meeting Room Use  
(29% increase)  
Community Tutoring =  
387 hours

**784**  
Documents  
Notarized

↑ of 17%  
over  
2022

**406**  
AARP Tax Returns  
Completed

Increased from 300 in 2022



# UPPER MAIN LINE

# Rotary Club

Upcoming Fundraiser

»» Be a golfer or a sponsor! ««

## Charity Golf Tournament

Date: **May 20, 2024**

Location: **Waynesborough Country Club**

Head to [umlrotary.org/golf-outing](http://umlrotary.org/golf-outing) for more details!



Here's your chance to play the Waynesborough golf course!



Ordinary people achieving extraordinary things for the community. The Upper Main Line Rotary Club members seek to apply their collective professional skills to solving major societal problems like hunger, water and sanitation, and disease. The group also exerts considerable time and effort to promoting peace, improving education, and helping veterans. The Rotary Club offers a fun way to stay actively engaged in your community, improve the lives of your neighbors, and provide support to those in need!

Eadeh Enterprises has been involved in community improvement for decades. Ernest Eadeh first joined the Wayne Rotary Club in the 1980s and actively served his community through various projects and scholarships. Fast forward to 2012 when Chantal Eadeh and Stacey Ballard followed in his footsteps and joined the newly established Upper Main Line Rotary Club, which still meets Wednesday mornings at Waynesborough Country Club.

The Upper Main Line Rotary is comprised of local business owners, professionals, retired folks, and people with an interest in rolling up their sleeves and solving problems in their surrounding neighborhoods.

"We really love giving back and Rotary has given us an opportunity to make a big impact where it's needed," commented Chantal Eadeh, a partner in Eadeh Enterprises. Upper Main Line Rotary responded to pandemic needs with a gift card fundraising strategy that successfully assisted local residents who were struggling when businesses shut down. The Club also partners with local non-profit organizations like Community Volunteers in Medicine by providing funding for a specialty dental chair, sponsoring a mammogram van visit to the facility, and even replacing light fixtures with cost-saving LED versions! Rotarians participate regularly with Ann's Heart in Phoenixville, an organization that serves situationally and chronically homeless individuals in Chester County. "We build gardens, we plant vegetables, we chop, cook and assemble meals for the community! I love it when our club comes together because great things happen – and we have fun doing it! Many of our projects are opportunities for us to get local kids involved in the community outreach efforts and we often partner with the Conestoga High School Interact students." comments Stacey Ballard, President of Eadeh Enterprises.

Fundraisers have included the annual Charity Golf Tournament, which brings in over \$100,000 each year, the Oktoberfest event at the Good Samaritan Church (who doesn't love a champion stein hoisting contest?), and the Chocolate and Cheer event, which offers a virtual tasting of local artisan chocolates expertly paired with micro-brewed beer (last year's involved Victory Brewing and Eclat Chocolates)!

Rotary is for everyone – it's vibrant, inclusive, active, and an amazing way to better our community and the world!



## Service Above Self



### What They Do & Why They Fundraise

- Meal distributions in conjunction with local food pantries
- Community center/homeless shelter/daycare centers renovations and small construction projects
- Playground maintenance and cleanup tasks
- Assembling medical supply donations for overseas hospitals in areas of need
- Planting and harvesting for Chester County Food Bank
- Clothing drives
- Funding, packing, and distributing food for children in food-insecure communities
- And so much more!

Because all of the club's operating expenses are fully-funded through dues paid by members, 100% of charity fundraising, including direct donations and all net proceeds from fundraising events, goes to humanitarian services.

*Volunteer Today!*

# GROWING GREENER GRANT

## Easttown Township Awarded Growing Greener Grant

Each year the PA Department of Environmental Protection (DEP) awards Growing Greener grants to municipalities for projects related to watershed restoration and protection, abandoned mine reclamation, and abandoned oil and gas well plugging projects. The EAC is thrilled to announce that Easttown Township was awarded \$41,217 to fund rain garden installations throughout the Township over the next three (3) years. The Growing Greener Grant award allows the EAC to build upon its pilot residential rain garden on Pennsylvania Ave in Berwyn and the flow through downspout planter being placed at Handel's Ice Cream this spring.

What does this mean for residents? The EAC intends to install 14 rain gardens or flow through downspout planters on residential or commercial property over the next 3 years. Four rain gardens or flow through downspout planters (connected to a home downspout system) each will be installed on properties of the first two years of the grant period; six rain gardens or flow through downspout planters will be placed in the third year of the grant period. The

residential rain garden application will be open to interested residents soon.

In partnership with the Willistown Conservation Trust, the EAC will be hosting a series of public education workshops focusing on the use and benefits of green infrastructure, including rain gardens, native plants, lawn to meadow conversions, riparian buffer management and the use and benefits of rain barrels.

Nearly 70% of the Township lives within the Darby Creek watershed, a waterbody important to both human and non-human plant and animal populations. Darby Creek flows south from its headwaters in Tredyffrin Township, through Easttown, Newtown and Radnor Townships, before flowing south and ending in the John Heinz National Wildlife Refuge, a major stopover site for thousands of migrating birds. Darby Creek also flows into the Delaware River, the source of our drinking water here in Easttown Township. Unfortunately, Darby Creek is impaired because of high sediment loads, urban runoff and storm sewers. Given our location at the headwaters of Darby Creek, what we as Easttown residents input into the creek sets the baseline for the rest of the waterway. By installing green infrastructure like rain gardens and flow

through planters, we can lower the flow and volume of water entering Darby Creek during storm events, while also building insect and bird habitat and biodiversity in our plant selections.

The EAC hopes the creation of the new rain garden program in Easttown will encourage greater resident awareness of our waterways and our responsibilities as upstream neighbors to those populations living downstream of us. More information can be found on the EAC webpage at: <https://www.easttown.org/472/Rain-Garden-Program>.



**Growing Greener awardees help keep Pennsylvania clean. It is imperative that communities in Pennsylvania receive the necessary funding to reduce pollutants in area waterways.**

DEP SECRETARY PATRICK MCDONNELL



# FAMILY FRIENDLY BICYCLE ROUTE

Easttown Township is soon to have a marked family-friendly bicycle route across the Township from Devon to Berwyn. This route will utilize quiet, low traffic stress roads within the Township to connect parks, schools, the library, and shops. The route will be marked with "Share-Arrows" on the roadway to indicate that the road is to be shared equally with bicycles and motor

vehicles. This will create a safe passageway for cyclists of all ages throughout the Township. In a larger view, this route makes for safe and easy connections to the Radnor Trail, The Chester Valley Trail, and a developing Main Line Greenway along the US30 corridor.

The concept for a bicycle route across Easttown originated in the Township's 2018

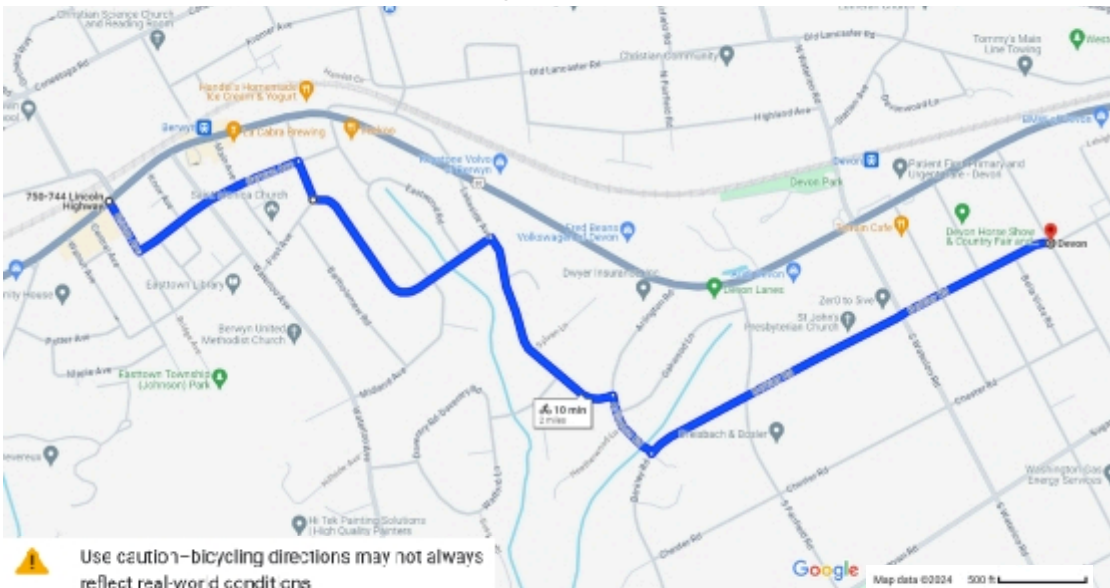
Comprehensive Plan and was further developed in the 2023 Recreation, Open Space, and Environmental Resources Plan Update. Both documents identified a need for improved bicycle and pedestrian mobility to enhance the quality of life in the Township.

The development of this route will direct and encourage residents off major, high traffic

stress roads and onto our quiet, low traffic stress roads. With connections on the east side to the shops of Devon, to the library and Johnson Park in Berwyn, and T/E Middle School on the west side, this safe family-friendly route is aimed to encourage residents to leave their motor vehicles at home and ride a bicycle for local trips. Riding a bicycle has the added benefit of enjoying some fresh air, the scenic beauty of Easttown Township, and a stop for ice cream one block off the route in Berwyn!

Google Maps 750-744 Lincoln Hwy, Berwyn, PA 19312 to Devon, Pennsylvania  
 Easttown Township - 513 750 Project (Shared Bike 70-16)

Bicycle 20 min, 10 min



The "shar-row" marking (a combination of "share" and "arrow") indicates lanes used by both cars and bicycles. Shar-row markings are often used when there is not enough space to allow for separate bike and motor vehicle travel lanes. They alert both drivers and cyclists to take extra care. Drivers and cyclists alike have the right to use the FULL shar-row lane.

# SAVE UP TO \$2,800

## NEW ROOF OR SIDING!

Restrictions apply.  
Call for details.

There's a reason We've been servicing the Main Line for 28 years!



# Jim Miller Inc.

## ROOFING · SIDING · GUTTERS

**484.412.8246** [www.jimmillerinc.com](http://www.jimmillerinc.com)

**28TH YEAR ANNIVERSARY SALE!**

# \$100 OFF ANY SERVICE\*

Offer Expires 6/30/2024



## SEE THE DIFFERENCE!

[www.johnbyrnepainting.com](http://www.johnbyrnepainting.com)

*Interior & Exterior Painting • Kitchen Cabinet Refinishing • Wallcoverings*

COLOR CONSULTATIONS | PRESSURE CLEANING | CARPENTRY  
PLASTER REPAIR | STUCCO REPAIR | SHUTTER INSTALLATION & REPAIR  
METICULOUS PREPARATION | SKILLED CRAFTSMANSHIP &  
A COMMITMENT TO EXCELLENCE

SERVING THE MAIN LINE SINCE 1978



# (610) 688-6878

# SCAM PROTECTION



## The Check is NOT in the Mail

**Why thieves want your checks and how you could stop them.**

Have you ever sent a check that was cashed, but the recipient said it never arrived? You may be the victim of check washing. Check washing scams involve changing the payee names and often the dollar amounts on checks and fraudulently depositing them. Occasionally, these checks are stolen from mailboxes and washed in chemicals to remove the ink. Some scammers will even use copiers or scanners to print fake copies of a check. In fact, Postal Inspectors recover more than \$1 billion in counterfeit checks and money orders every year, but you can take steps to protect yourself.

### 1. Pay your bills online.

As long as you're not on a public WiFi connection, paying bills online is safer than a check through the mail, since your bank account and the payment systems for your bills are encrypted.

### 2. Deliver your mail to a post office.

Don't leave envelopes containing checks in your own mailbox or in outdoor USPS collection boxes after the last pickup time. Instead, take your letter to the nearest post office during business hours and either hand it to a clerk or slide it through the outgoing mail slot inside the building.

### 3. Use a pen with blue or black non-erasable gel ink.

Gel ink soaks into paper and may be more difficult to remove than ballpoint pen ink, according to authorities.

### 4. Don't let delivered mail sit in your mailbox.

Grab your mail every day, as close to the delivery time as possible. If you'll be away, ask a trusted friend to collect it or have the post office hold it until you're back home.

### 5. Monitor your bank account.

Don't wait for your monthly statement. Go online every few days to review account balances and look at checks drawn against them.

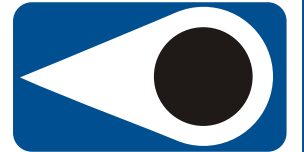
### 6. Report incidents quickly.

Contact your bank as soon as possible after suspicious activity; banks are generally required to replace funds stolen via fraudulent checks, but only if the scam is reported within 30 days of the date of your bank statement. Also, contact the U.S. Postal Inspection Service and credit reporting agencies.

## Personal Safety Tips

- Don't leave your wallet or purse in your car at any time it's too tempting a target for thieves
- Don't leave a purse or bag unattended in a marketsecure bag handles in the child seat with the seatbelt, but don't walk away from your cart
- Keep cars locked even in your own driveway unlocked cars are being entered in driveways
- Advise your alarm company of your cell phone number as well as your home number; if you're on vacation, they'll be able to reach you as well as reach the police or fire department

**EASTTOWN  
TOWNSHIP**



**NEIGHBORHOOD  
CRIME WATCH**

## NATURE PARTICIPATION EVENT



**A** birdwatching walkaround the village of Berwyn led by expert birder Phil Whitmer, Vice President of Bird Town Pennsylvania.

**April 13th, 8:30 AM to 10 AM**  
**Meet at the**  
**Easttown Library Parking Lot**  
**at 8:30 AM**  
**720 First Avenue, Berwyn, PA**

- Everyone of all ages welcome. Children must be accompanied by adult.
- Check the weather for what to wear
- The event will occur unless it rains heavily
- Register at <https://ccls.libcal.com/calendar/Easttown>
- Jointly sponsored by the Easttown Township EAC and the Easttown Library with a grant from Bird Town Pennsylvania

Things to Bring if you have them:

Binoculars & Field Guide of Pennsylvania Birds.

You may also want: Water Bottle, Sunscreen, Hat





*Caring for the Main Line's Trees Since 1986*

WHY CHOOSE  
SHREINER  
TREE CARE?

*Easy!*  
It's our people.


SCAN FOR AN APPOINTMENT



CALL OR TEXT 610 265 6004



METROPOLITAN  
VETERINARY  
ASSOCIATES

 METRO-VET.COM

ANESTHESIA • BEHAVIOR • CARDIOLOGY • DENTISTRY • DERMATOLOGY  
EMERGENCY & CRITICAL CARE • INTERNAL MEDICINE • MINIMALLY INVASIVE SURGERY  
NEUROLOGY • ONCOLOGY • OPHTHALMOLOGY • RADIOLOGY • SURGERY



# Because a breast cancer diagnosis is hard enough.

---

## CANCER CARE AT MAIN LINE HEALTH

---

There are many things our nurse navigators do to help you along your breast cancer journey. Like explain your pathology report, go over your treatment options, detail your progress and support your loved ones. It's the most honorable thing we'll ever do.

## Be seen.



Lankenau Medical Center | Bryn Mawr Hospital | Paoli Hospital | Riddle Hospital  
Bryn Mawr Rehab Hospital | Mirmont Treatment Center | HomeCare & Hospice | Lankenau Institute for Medical Research  
[mainlinehealth.org/breastcancer](https://mainlinehealth.org/breastcancer)

# IDLEWOOD FARM



Historic

## Idlewood Farm

Around 1895, William N. Wilbur, famous for Wilbur Chocolates, and his wife, Elizabeth Fitch, purchased their hilltop property in Devon. Within a few years, the Wilburs increased their land holdings by purchasing neighboring parcels of land, which included the property that contained the Waterloo Mill. Architectural records seem to indicate that the Wilburs transformed the original farmhouse, which was located on their property, into a grand country Manor around 1900 and named it Idlewood Farm (a.k.a. Hilltop House). The original spring house remains today along the walking path adjacent to Newtown Road in Hilltop Park.



### The Chocolate Empire

The history of Wilbur Chocolates dates back to 1865 when William's father, H.O. Wilbur was a successful hardware and stove merchant in Vineland, New Jersey. The opportunity came along to unite with Samuel Croft, a confectionery merchant in Philadelphia. The two formed Croft & Wilbur, producing molasses and hard candy. The candy was sold to the railroad company for train boys to sell to riders.

By 1884, the business grew to include the manufacture of cocoa and chocolate. H.O. Wilbur and Sons was formed to produce the chocolate products while Croft continued production of other candy varieties under his own name. In 1887, Wilbur & Sons moved into a larger facility in Philadelphia where the business was so successful that the senior Wilbur was able to retire at age 59, placing the chocolate business in the hands of his sons.

During the early 1890's William Wilbur brought two brothers, Steve and Mass Oriole from France to assist in developing other lines of chocolate sundries. In 1894, the Wilbur Bud, designed to resemble a flower bud was introduced. When Lawrence Wilbur (third generation) returned to the Philadelphia business from studying chocolate manufacturing in Germany, he developed the machine to foil-wrap the Wilbur Buds. The wrapped method was discontinued in the early years. Today after 130 years you can still enjoy Wilbur Chocolates and the famous Wilbur Bud.

### From Farmhouse to Grand Manor

According to architectural projects secured by the Wilburs between 1895 and 1905, the home's transformation from farmhouse to a country Victorian Tudor seems to reflect the characteristics associated with the architectural design style of R. Brognard Okie, a locally renowned architect at the time. Soon after the home's initial transformation, the exterior's darkwood trim and plaster were painted to the all white exterior that's apparent at this time. During some electrical upgrades a few years back an original window frame (still intact) and stone porch landing was discovered. It's believed this find was the front entrance of the old farmhouse, which faced Waterloo Road. The original walk-in fireplace is located in a storage closet in the Great Room in Hilltop House nearby the found window frame and porch landing.

Renamed by another owner, "Hilltop House" is under the Stewardship of Easttown Township and given by the generosity of Dr. and Mrs. Sterg O'Dell. The manor home has been made available for weddings, parties and special events, in the same grand style as the Wilbur Family meant it to be.

Credits: Hilltop House watercolor by Gail Grams courtesy Easttown Township; Portraits of William and Elizabeth Wilbur courtesy Toby Charrington; Weeders and Friends photo courtesy Nancy Holmes; Weeders Logo courtesy of The Weeders; Hilltop House and Garden Restoration photo courtesy Maraaret DePiano



### Easttown Township Parks & Recreation Board Gardens Restoration Project in Hilltop Park

The courtyard or formal area of the Hilltop House Gardens was a long lost treasure of beauty and historical significance and was greatly in need of renewal and maintenance for a significant number of years. These historic gardens once served as a lavish formal entertaining area for the Wilbur Family and were restored for public use in 2021. This open restored space of beauty and reflection provides the community with a sense of relaxation and peacefulness while connecting with nature.



The Weeders and Friends on Planting Day at Hilltop Gardens Restoration project in November 2021.

### The Gardens Restoration Volunteers—The Weeders

The garden bed restoration design began with the volunteer assistance of Julie Wood DeVuono, local landscape architect and member of The Weeders garden club to design the plant and shrubbery placement, as well as placement of garden accessories keeping the beautiful spirit of this garden treasure alive for many years to come. A group of Weeders from the club maintain the beds throughout the seasons and make recommendations for new plantings as needed. The Weeders date back to 1907 and accumulated countless accomplishments and awards over the years. Some current projects in addition to maintaining the Hilltop House Gardens includes making flower arrangements placed in the Ronald McDonald House at St. Christopher's Hospital for Children in Philadelphia; Strafford Station, maintaining the grounds of the historic 1876 Victorian railroad station; enhancing and maintaining the Gazebo Garden at the Ludington Library in Bryn Mawr.

Stop by and enjoy the beautifully restored gardens in Hilltop Park. If you are thinking about having a special event—discover Hilltop House with Perfect Settings as the exclusive caterer. For more information please visit Hilltop House website at [hilltopdevon.com](http://hilltopdevon.com).



# HISTORIC PROFILE: WILLIAM H. BURNS

## Berwyn Resident and Prominent Local Builder

The Easttown Historical Commission has been reviewing many of the historic properties in the Township, and has identified several with ties to resident builder, William H. Burns (1857-1910).



W. H. Burns and Children, 1900 (TEHS 1988)

The Burns family were prominent in the local business, cultural, and religious life in the Berwyn area. His grandfather, Peter Burns Sr. was a local farmer and cabinet maker who served in the army during the War of 1812 and worked at the Philadelphia Navy Yard during the Civil War. His father, Peter Burns Jr. was a stonemason who built many local bridges. Both Peter Sr. and Peter Jr. were trustees of Trinity Presbyterian Church. William H. was the oldest son of Peter Burns, Jr. His brother, Frank Burns, was a charter member of the TredyffrinEasttown History Club (now the TredyffrinEasttown Historical Society) and a respected amateur ornithologist.

William H. was a prominent carpenter and builder in Berwyn. He learned his trade as an apprentice, possibly influenced by the cabinetry work of his grandfather. By the age of 21 he had established a successful contractor business.

Among his many local projects were 16 stations on the Pennsylvania RR, the Berwyn Bank, the First Methodist church on Main Street (now Footlighters Theater), the sanctuary and Annex for Trinity Church, and

many of the "elegant and tasteful" residences in the Village of Berwyn. In 1888 he built the one-story stone school building on Bridge Avenue across from the current location of the Berwyn Fire Company, and added a second story in 1893. In 1908 he built the first TE Joint High School. Neither building remains today.

Another part of his business was supplying lumber and decorative trim for many residences in the Village of Berwyn and projects along the Main Line. His factory, *The Berwyn Planing Mill* was originally located in the Village behind his first home at the Northwest corner of Bridge St. and First Ave. He later built a family home at the corner of Kromer and Price Avenues, and moved the Mill north of the railroad tracks behind the Kromer Ave. house. Both of his residences still stand.



The TE Joint High School, ca 1909 (TEHS 1977)

In 1881, William married Minnie Wells, granddaughter of Thomas Aiken Sr. and niece of Pastor Thomas Aiken Jr. They had seven children. William H. and his wife were also active musically. Minnie was an accomplished vocalist and instrumental musician. William played piccolo in the town orchestra before 1884, and in the Berwyn Brass Band. Minnie died shortly after the birth of their youngest child. Several of their children were lifelong members of the Trinity church. William H. died in 1910.



The W. H. Burns Planing Mill (ca1900-05, TEHS, 1996)



W. H. Burns original home on Bridge Street (1991 Herb Fry)

Sources: -TEHS Quarterly Archive, April 1988 Volume 26, *The Burns Family*, by Peggy Egertson  
 -TEHS Quarterly Archive, October 1997, *Berwyn Village Walk*, by C. Herbert Fry  
 -Planing Mill Photos: c1904-07, Herb and Barbara Fry Collection, TEHS  
 -Photo of W. H. Burns: c1900, TEHS Archive



W.H. Burns home on Kromer Ave 1890 (TEHS 1997) and today (Courtesy of L.A. DeYoung 2023).



# INJURY PREVENTION

## WHAT IS CARPAL TUNNEL SYNDROME?

BY THE PHILADELPHIA HAND TO SHOULDER CENTER PHYSICIANS

Carpal tunnel syndrome is a common condition that causes pain, numbness, and tingling in the hand and arm. The condition occurs when one of the major nerves to the hand—the median nerve—is squeezed or compressed as it travels through the wrist.

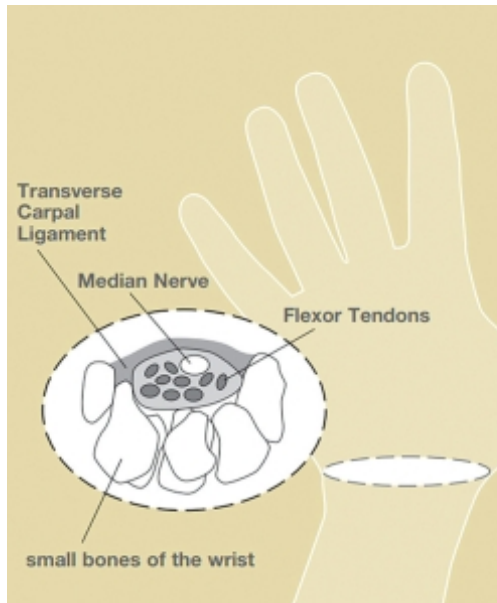
In addition to numbness and tingling, carpal tunnel syndrome can cause swelling, weakness, and night time pain. Patients sometimes describe dropping things unexpectedly and may have difficulty with buttoning shirts, tying shoelaces, or handling loose change.



### What causes carpal tunnel syndrome?

Carpal tunnel syndrome is frequently seen in individuals who develop swelling or inflammation in their hands. People who smoke, as well as those with connective tissue diseases, diabetes mellitus, and hypothyroidism, may be at greater risk. Repetitive work activities can also cause carpal tunnel syndrome.

The median nerve acts as an electrical wire between the spinal cord and the hand. The nerve passes through the carpal tunnel in the wrist along with nine tendons that bend the fingers. When the tendons in the



wrist become swollen and inflamed, the median nerve can become compressed by the transverse carpal ligament (see figure), leading to carpal tunnel symptoms.

Early on, symptoms commonly occur during sleeping hours. In more advanced cases, the symptoms can become problematic during waking hours. Many sufferers describe symptoms with benign activities, like reading the newspaper or driving a car.

### What can a hand surgeon do to help?

A hand surgeon can order special nerve tests to verify the extent of the problem. Custom wrist splints are helpful for early stages of carpal tunnel syndrome. These splints are worn at nighttime to relieve pressure on the median nerve and to prevent the wrists from bending during sleep.

Cortisone injections often provide excellent relief from symptoms. Unfortunately, symptomatic relief is only temporary, and most people experience a recurrence of symptoms after 3-4 months.

For chronic or more advanced cases, carpal tunnel surgery is often recommended as the best course of treatment.

### What can I expect from surgery?

Surgery provides more space for the median nerve and relieves pressure on the median nerve and tendons. This procedure is typically done under light sedation and local anesthesia and usually takes only minutes to complete.

While there are several different approaches to performing carpal tunnel surgery, usually a 1/2 inch incision is made near the wrist and use of a camera to release the tunnel under direct visualization. This minimally invasive approach minimizes discomfort following surgery and allows patients to return to activities more quickly. Over 95 percent of patients improve dramatically following surgical intervention, with most returning to daily activities within days. Many patients can resume heavier job-related activities after 2-4 weeks.

Contact us at 1-610-768-5959 to schedule an appointment with one of our providers.



**PHILADELPHIA  
HAND TO SHOULDER  
CENTER**

**13 Offices in  
Pennsylvania & New Jersey  
including:**

**King of Prussia · Havertown  
Paoli · Langhorne  
Collegeville  
Center City Philadelphia  
South Philadelphia  
Willow Grove · Lansdale  
Rockledge · Glen Mills**

**Cape May Court House  
Cherry Hill**



# EXCEPTIONAL CARE

*For Hands, Wrists, Arms  
Elbows & Shoulders*



PHILADELPHIA  
HAND TO SHOULDER  
CENTER

610-768-5959

[www.Hand2ShoulderCenter.com](http://www.Hand2ShoulderCenter.com)

*13 Offices in PA and NJ  
including King of Prussia,  
Havertown and Paoli*



Premier<sup>®</sup>  
ORTHOPAEDICS

Outcomes by HOPCo

**Expert  
Orthopaedic  
& Spine Care  
When and  
Where You  
Need it.**

We are pleased to offer  
**same day and next day  
appointments.**

LOCATIONS IN  
**CHESTER, DELAWARE, MONTGOMERY  
& PHILADELPHIA COUNTIES**

**Our team specializes in:**

- Orthopaedic Surgery
- Sports Medicine
- Spine Care
- Joint Replacement Surgery
- Foot & Ankle / Podiatry
- Hand & Wrist Care
- Physical Medicine & Rehabilitation
- Rheumatology
- MRI
- Physical Therapy
- Orthopaedic Urgent Care

To schedule an appointment  
call **1.855.ORTHO24**  
or visit us at [premierortho.com](http://premierortho.com)

# PRESERVING HISTORIC WAYNESBOROUGH

While the field-like terrain and adjacent forest provide a scenic backdrop to the stately stone manor called Waynesborough, until recently this image was disrupted by the deteriorating conditions of the house's cedar roof. The roof was covered in microbial growth and the curled, slipped, and missing roof shakes indicated that it had reached the end of its serviceable 30-to-50 year lifetime. To preserve the integrity of the historic home and the safety of its collections, the Philadelphia Society for the Preservation of Landmarks and the Historic Waynesborough House Committee sprang into action. The 93-year-old nonprofit steward of the house, known as PhilaLandmarks for short, put together a plan to raise the funds required to put a new roof on the manor house.

Historic Waynesborough is a National Historic Landmark located in Easttown Township just outside of Paoli. The Georgian-style house is recognized both locally and nationally for its quintessential Chester County architecture. Situated on ten lush acres, it was once the home of the colorful, brash, and deeply committed General Anthony Wayne, a notable military officer who served in both the War of the American Revolution and in later campaigns under Washington's presidency. Seven generations of the Wayne family continuously owned the property from 1724 until 1965. Today, the house is furnished with a historic collection interpreting 250 years of the Wayne family and the site also features a carriage house used as a meeting space, a semi-permanent tent structure, a park, and a caretaker's building. Open to the public since the 1980s for research, events, programs, and touring, Historic Waynesborough's buildings, landscape, and collections present facets of every period of American history since colonial times.

The Historic Waynesborough Restoration Project received generous financial support from many individual donors and sponsors as well as contributions from the *Save America's Treasures* grant, the Department of the Interior, the Keystone Historic Preservation Construction grant program, the Pennsylvania Society of Sons of the Revolution, and Easttown Township. After a two-year planning and fundraising phase, PhilaLandmarks is proud to announce that the roof project was finally completed in February 2024 by roofing preservation experts at Kurtz Construction Company.

With building plans from architect Daniel T. Campbell, AIA., the project included replacing and restoring Waynesborough's main block and addition roofs, porch roof, and bakehouse roof. It also included restoring the dormers and structural stabilization on the main block and porch roof. The goal of the project was to replace the roof (installed in the 1990s) to prevent further moisture infiltration, to secure it against material decay and environmental

threats and ultimately, protect and preserve the birthplace and home of General Anthony Wayne. In addition, adding modern internal structural support to the roof of the main block ensured that the building will be stabilized for many years to come and can continue to serve as a cultural and educational site.

Historic buildings are integral reminders of a place's substance and character which aid in our collective understanding of the past. Historic Waynesborough is a wonderful treasure in its community and a window into the lives of the people who lived in Chester County over a span of 250 years.

PhilaLandmarks invites the Easttown community to come celebrate the 300<sup>th</sup> anniversary of Historic Waynesborough and the completion of this important preservation project on **Saturday, April 13<sup>th</sup> from 11:00 am to 1:00 pm** at 2049 Waynesborough Road, Paoli, PA 19301.

The event is free to the public but does require advanced registration at [www.philandmarks.org/upcomingevents](http://www.philandmarks.org/upcomingevents). There will be food sponsored by Jeffrey Miller Catering, music, family friendly activities in partnership with Pennsylvania Colonial Plantation, Historic Sugartown and the Valley Forge Park Alliance and a ribbon cutting ceremony honoring the completion of the roof project.

Historic Waynesborough is open for history tours April through December, Thursdays through Sundays from 1:00pm to 3:00pm. To reach out to make an appointment for a tour please email [historicwaynesborough@philandmarks.org](mailto:historicwaynesborough@philandmarks.org) or call (610)647-1779.

*Construction photos courtesy of Kurtz Construction Company.*



Kayla Anthony, Executive Director of PhilaLandmarks.

The Philadelphia Society for the Preservation of Landmarks (PhilaLandmarks) inspires people to engage with history and build community by preserving our historic sites and providing relevant educational, historical, and cultural programming. The organization was founded in 1931 to save the Powel House (1765) from imminent demolition. As short-term advocacy evolved into long-term stewardship, PhilaLandmarks acquired two more sites in Philadelphia. In 1940, Grumblethorpe House & Garden (1744) joined the PhilaLandmarks family and in 1966, the Hill-Physick House (1786) was acquired. In 1980 PhilaLandmarks entered into a management agreement with the Easttown Township and the National Trust for Historic Preservation to preserve and present Historic Waynesborough as a house museum in Paoli, PA.

Door hardware, bath accessories, cabinet hardware, and more.



**DAYTON  
LOCK COMPANY LLC**

**Locks • Keys  
Safes  
Decorative Brass Hardware**

Showroom: 324 W. Lancaster Ave.  
Wayne, PA 19087  
**610-688-9188**  
www.daytonlock.com

Locksmith Service To Your Home or Business

**THE SILVER BACK COMPANY'S**



**Generators**  
Solutions for all budgets

SALES | INSTALLATION | SERVICE | CERTIFIED TECHNICIAN

**610-407-9571**  
**SPARKYPAISON@GMAIL.COM**

**GENERAC**  
CERTIFIED



Automatic Home Standby Generator

**DALY**



610.896.BUGS  
215.229.BUGS  
(2847)

P.O. Box 721  
Ardmore, PA 19003  
service@dalypest.com

**Termite & Pest Management**  
A Limited Liability Company  
**DALYPEST.COM**

*Over 4,300 Homes see these ads!  
Call 610-265-6277 to advertise your business or organization.*

**PROFESSIONAL  
CARE YOU CAN  
COUNT ON**

Whether you are seeking

- Post Acute Rehabilitation
- Long Term Care
- Secured Memory Care
- A Respite Stay

Our communities can offer a variety of services designed to help you achieve your goals.

**PLEASE CALL FOR MORE INFO OR  
TO SET UP A TOUR**

**Now Hiring  
CNA, RN, LPN  
contact the buildings  
for more information**

**WE ARE ABLE TO ACCEPT**  
Medicare, Medicaid and most  
Commercial Insurance Plans  
We help with the Medicaid application process

**ROSEWOOD GARDENS**  
*Adult & Memory Care*  
610.356.0100  
rosewoodrhc.com

**WESTGATE HILLS**  
ADULT DAY & MEMORY CARE CENTER  
610.449.8600  
westgatehillrehab.com

**GREEN MEADOWS**  
Memory Support & Nursing  
610.296.4170  
greenmeadowscc.com




# SEWER AUTHORITY NEWS

## Sanitary Sewer System: How it affects your sewer rental

Easttown Township provides a collection of sanitary sewage from residents and businesses via gravity flow into 13 separate pumping stations throughout the Township. Much of the waste is pumped two (2) and, in some cases, three (3) times before it leaves the Township. These pump stations force the wastewater into the adjacent force and gravity mains of Tredyffrin Township, which conveys the sewage for treatment to either the Valley Forge Sewer Authority (Phoenixville) or Trout Run (Upper Merion).

## Reducing Costs

The Township pays "by the gallon" for conveyance and treatment of the wastewater once it leaves the Township. The Township pays for the operation,

maintenance and capital improvements to the complex system of gravity lines, force mains, and pump stations that comprise the sanitary sewer system. These costs are reflected on your quarterly sewer bills.

## Sewer Rental Rates

**Sewer rates are based on water consumption as supplied by Aqua PA. Current rates are as follows:**

- **Base Residential** (10,000 gallons per quarter): **\$156.64**  
Additional usage: \$13.96 per 1,000 gallons over 10,000 gallons per quarter
- **Base Non-Residential** (10,000 gallons per quarter): **\$173.14**  
Additional usage: \$15.08 per 1,000 gallons over 10,000 gallons per quarter
- **Unmetered Water Usage** (Well Users)  
Flat Rate: **\$236.03** per quarter

**Sewer bill payments can be made by:**

- **Calling** 833-591-7204;
- **In-person** at Tompkins Bank (Wayne location);
- **Mailed to Easttown Township Sewer Rental** at P.O. Box 33, Ithaca, NY 14851; or
- **Online at** <https://easttowntownship.secure.munibilling.com/>

## How Residents & Businesses Can Help Reduce Costs

1. Making sure sump pumps and storm drains are not connected to the sanitary sewer;
2. Keeping cleanouts at least six (6) inches above the ground and cupped;
3. Keeping service connections (laterals) in good shape.

## Happy New Year! Let's Resolve To Be Trash Smart Patti Lynn, Recycling Resources Manager



What does it mean to be Trash Smart? It means to be more thoughtful and engaged in how you manage solid waste in your everyday life. It is behavior. If you buy that new thing, what will you do with the old thing? How can you stop wasting food? What does "away" mean when we throw stuff away? This Trash Smart series will address different household waste streams, and today we start with recycling.

We make about 30,000 decisions in a day. If we consistently make the *right* decisions about recycling, then recycling *right* becomes a good habit, and your mind can focus on other decisions.

## How can you recycle right?

- First, go to your municipal resources or your private recycling hauler and print out the list of acceptable and unacceptable materials for recycling where you live. It may also include the collection schedule. **Post that list in a spot near your recycling container.** Don't know what to do with that plastic takeout box? Look at the list! Done!
- Yes, plastic is confusing. At least know that you should be recycling plastic bottles that have a neck (think water, milk, juice, detergent). It's the other plastic containers that give us a headache. **If in doubt, check it out. Not everything can be recycled!**
- **Universally NOT accepted** in your recycling bins: batteries, food waste, plastic bags, any hangers, wire, diapers, scrap metal. Look at your list! And throw away anything smaller than a credit card; this includes bottle caps.

## Why is it important?

Chester County is a scenic, diverse community of 534,000 people. Some benefits of our collective recycling efforts:

- Municipalities earned nearly \$1M from PA Recycling Performance grant awards in 2021.
- Our two local landfills, Lanchester and SECCRA, have more years to take your trash. More than 310,000 tons of recyclables were diverted in 2021.
- That's the equivalent of saving 33M gallons of gas.

**To sum it up,** get your local recycling list and post it up. Focus on what is acceptable. Empty, clean, dry, and loose materials (not bagged; but paper bags for paper are OK). And over and over again. It's not hard—it's **Trash Smart!**



## TRASH & RECYCLING Residential

The Township's goal is to provide you with continued quality trash and recycling services. The Township contracts with a hauler to collect trash and recyclables once a week from all single-family residences and multifamily residential properties with less than four (4) units.

### Billing

- Basic Curbside Service: \$108.39
- Rear Yard (driveway <100'): \$177.21
- Rear Yard (driveway >100'): \$240.57

### Trash and Recycling bill payments can be made by:

- Calling 877-589-8640
- In-person at Tompkins Bank (Wayne location)

- Mailed to Easttown Township Trash Disposal at P.O. Box 271, Ithaca, NY 14851
- Online at <https://easttowntownshiptrash.secure.munibilling.com/>

### What should I recycle?

The following items **MUST** be emptied, rinsed, dried and combined into the recycling bin:

- CORRUGATED PAPER
- MIXED PAPER
- CLEAR AND COLORED GLASS CONTAINERS
- ALUMINUM, STEEL OR BIMETAL CONTAINERS
- PLASTICS (recycling codes 1-7)

Leaf waste is collected at least monthly by the Township's hauler (per the collection schedule.)

### Commercial

Owners or occupants of all commercial, institutional and Township properties are required to contract for their own collection of municipal solid waste and recyclables.

### What must be recycled?

The following materials **MUST** be separated from solid waste and collected at least once per month:

- CORRUGATED PAPER
- HIGH-GRADE OFFICE PAPER
- MIXED PAPER
- CLEAR AND COLORED GLASS CONTAINERS
- ALUMINUM, STEEL OR BIMETAL CONTAINERS
- PLASTICS (recycling codes 1-7)
- LEAF WASTE

# RECYCLING REQUIREMENTS: RESIDENTIAL & COMMERCIAL

**Corrugated Paper • Mixed Paper (including high-grade office paper)**

**Clear & Colored Glass Containers • Aluminum Containers • Steel & Bimetallic Containers**

**Plastics #1-#7 • Leaf Waste**

RECYCLABLE	Accepted Items	How to Identify/Prepare	NOT ACCEPTED
Corrugated Paper (Cardboard)	Corrugated boxes (with alternating ridges/groves)	Break down cardboard boxes flat to 2'x2' pieces	Soiled containers, such as greasy pizza boxes
Mixed Paper	Broad-e.g. food or beverage cartons, newsprint, discarded mail, telephone books, paperboard, magazines and catalogs	Clean, dry paper	Wet or soiled paper
High-Grade Office Paper	Letterhead, copier paper, envelopes, printer scrap		Heavily soiled papers, or papers with bindings or clips attached
Glass	Glass bottles, jars and containers	Clear and colored glass	Broken glass, glassware, window panes, mirrors, light bulbs
Aluminum	Aluminum Cans	Aluminum items will not stick to a magnet	Scrap metal, car parts, appliances
Steel & Bimetallic Containers	All cans other than aluminum	Steel and bimetal items will stick to a magnet	Scrap metal, car parts, appliances
Plastics	#1 - #7 rigid plastic containers	Looking for recycling triangle with plastic # on bottom of container	Plastic bags, shrink-wrap packaging, unnumbered plastic, toys, packing peanuts, Styrofoam, bubble wrap

## Tips to Reduce Waste

● **Reduce & Reuse:** Reduce your waste stream by making thoughtful decisions about what you buy and reuse what materials you can.

— **Questions to ask yourself when making a purchase:**

- Was this product made from recycled content?
- Is the packing or container recyclable (e.g. cartons, bottles)?
- Does this item contain environmentally friendly ingredients?
- Do I need to take a bag for this purchase?
- Can I buy this item in bulk?
- **Buy Recycled:** Look for products made with recycled materials and help create a market for recyclable materials.
- **Waste Less Food:** According to the Environmental Protection Agency, the United States is the global leader in food waste, with Americans discarding nearly 40 million tons of food every year, most of which is sent to landfills and is the single largest component taking up space inside US landfills. That turns into about 33 million cars' worth of greenhouse gases.
  - Don't buy more than you're likely to cook.
  - Shop more often and buy less.
  - Make a shopping list and stick to it.

- Don't be afraid to buy less attractive (but still fresh!) produce - just because it's not as "pretty" doesn't mean nutritional value is lost.
- Expiration dates marked as "use by" or "sell by" are a general guide, and not regulated terms - you may be throwing out food that is still okay to eat.
- Pay attention to how many bags of trash you produce in a week and the money you spend.

### ● **Recycle Beyond the Kitchen:**

Recyclables generated in other areas of the house, such as shampoo bottles in your bathroom or papers in your home office, are often cleaner than food containers, but these can be forgotten. Keep a marked recycling bin on each floor or section of the house.

### ● **Recycle Everywhere:** To recycle materials not accepted in Easttown's curb-side pickup, try taking your:

- ♻️ Single-use plastic bags to the Township Building vestibule, Easttown Library vestibule, grocery or big-box stores
- ♻️ Used tires to tire stores
- ♻️ Used motor oil, transmission fluid and oil filters to auto parts stores and garages
- ♻️ E-waste to electronics stores
- ♻️ CFL bulbs to home improvement stores

- ♻️ Motor vehicle and other lead acid batteries to any retailers that sell them
- ♻️ Used clothing and household goods to charitable organizations

### ● **When in Doubt, Throw it Out:**

If you're not sure something is recyclable, the best choice is to throw it in the trash. This eliminates potential contamination of recyclable materials, which could cause a much greater increase in unnecessary waste than just trashing your borderline item.

**Book your Appointment  
for the next Household  
Hazard Waste Event on  
Saturday April 20, 2024  
at Technical College  
High School  
(Pickering Campus)  
1580 Charlestown Road,  
Phoenixville – by the  
Chester County Solid  
Waste Authority**

2024

# Easttown



Sustainability in Action

## YARD WASTE COLLECTION CALENDAR\*

\*FULL COLLECTION CALENDAR AVAILABLE ON THE WEBSITE OR BY CALLING THE TOWNSHIP.

Yard Waste Zones 1 & 3 APRIL 2024							Yard Waste Zones 2 & 4 MAY 2024							Holiday - No Collection JUNE 2024							Alternate recycling/trash collection due to a holiday JULY 2024						
S	M	T	W	T	F	S	S	M	T	W	T	F	S	S	M	T	W	T	F	S	S	M	T	W	T	F	S
	1	2	3	4	5	6				1	2	3	4							1		1	2	3	4	5	6
7	8	9	10	11	12	13	5	6	7	8	9	10	11	2	3	4	5	6	7	8	7	8	9	10	11	12	13
14	15	16	17	18	19	20	12	13	14	15	16	17	18	9	10	11	12	13	14	15	14	15	16	17	18	19	20
21	22	23	24	25	26	27	19	20	21	22	23	24	25	16	17	18	19	20	21	22	21	22	23	24	25	26	27
28	29	30					26	27	28	29	30	31		23	24	25	26	27	28	29	28	29	30	31			
													30														

## EASTTOWN SERVICE ZONES & DAYS\*

- 1 - Recycling & Trash - Monday
- 2 - Recycling & Trash - Tuesday
- 3 - Recycling & Trash - Thursday
- 4 - Recycling & Trash - Friday
- Rear Yard Trash - Monday
- Rear Yard Recycling - Tuesday & Wednesday

## Preparation of Yard Waste Materials for Collection

- Collection occurs once a month January - September and twice a month October - December.
- Yard waste must be placed into manageable bundles and tied with string, or may be put in an open-end trash can, as long as limbs are not protruding above the can. Limbs that are loose on the ground will not be picked up.
- Limbs and branches must not exceed 6 feet in length and 4 inches in diameter.
- Grass clippings are considered trash, not yard waste.
- While there is NO LIMIT to the number of bagged leaves/yard waste collected, there is a max weight of 300 lbs. of brush and/or bagged leaves/yard waste from a single residence.
- Leaves/yard waste must be in biodegradable paper bags or open-ended trash cans. Leaves/yard waste in plastic bags will NOT be collected.
- REAR-YARD CUSTOMERS:** yard waste must be placed at the curb for collection — check with the Easttown Township solid waste collection schedule to determine the service zone.

## Hidden Objects

Can you find all the hidden objects at the summer barbecue?

Recycling Simplified

REPUBLIC SERVICES

Visit [RecyclingSimplified.com](http://RecyclingSimplified.com) for more tips on what is and isn't recyclable.

Recyclables

Sustainability

Non-Recyclables

©2024 Republic Services, Inc.

**4,300 HOMES IN EASTTOWN TOWNSHIP  
SAW THIS AD!**



**ADVERTISE YOUR BUSINESS**

**610.265.6277 FRANKLINMAPS@AOL.COM**

**RADNOR | TREDYFFRIN | EASTTOWN | HAVERFORD | KING OF PRUSSIA | LOWER PROVIDENCE | MARPLE**

# **PAINLESS DENT REPAIR**

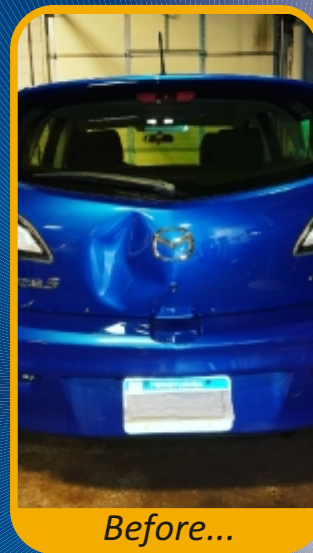
**AT 24 HOUR  
CAR WASH  
King Of Prussia**

**DONE IN AS LITTLE AS  
20 MINUTES!**

**SCHEDULE TODAY!**

**NO PAINTING REQUIRED!**

**610-256-6447**



*Before...*



**AFTER!**

337 S. Henderson Rd., King of Prussia



Easttown Township  
566 Beaumont Road  
Devon, PA 19333

**WARD B BURNSIDE  
& CO.**  
Established 1953

**Plumbing  
Heating  
Air Conditioning**

[WWW.BURNSIDEPLUMBING.COM](http://WWW.BURNSIDEPLUMBING.COM)  
**610-644-2025**  
714 Lancaster Ave, Berwyn, PA 19312

**THE GARDEN SHOPPE**  
GARDEN CENTER  
All Locally Grown Plants!

*Annuals,  
Perennials, Shrubs,  
Vegetable & Herb Plants,  
House Plants, Soils, Mulch*

**GIFT SHOP**  
POTS & OTHER  
GARDEN ACCESSORIES

Hours: MON-SUN 9-5:30  
616 W. Lancaster Ave.  
Strafford, PA 19087

[www.gardenshoppeld.com](http://www.gardenshoppeld.com) **610-687-8800**

Trattoria  
*San Nicola*  
Where authentic Italian cuisine meets the arts



4 Manor Rd, Paoli 610.695.8990  
[www.sannicola.net](http://www.sannicola.net)

**Devon Liberty** **610.293.9802**  
141 Lancaster Ave.  
Devon, PA 19333



**Automotive Repairs**  
**Batteries • Tires • Tune-up • Accessories**  
**Front End Alignment • Air Conditioning**  
**State Inspection • General Inspection**  
**Emissions Inspections**

